

Florence Road Wimbledon, SW19 8TL

£995,000 Freehold



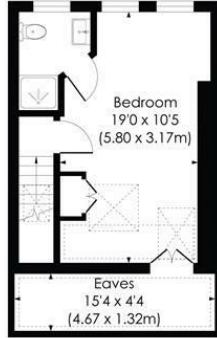
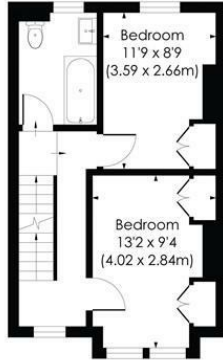
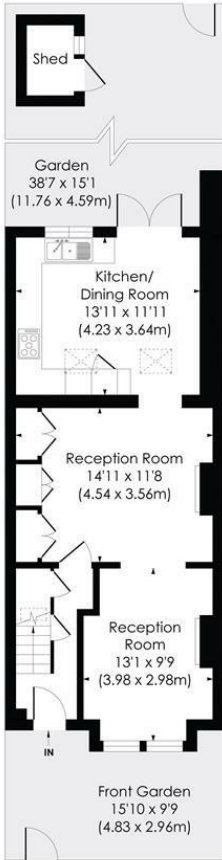
This beautiful fully extended three double bedroom Victorian terraced house, with two bathrooms, is situated in the sought after South Park Gardens area of Wimbledon. The property has been extended on the ground floor creating a spacious kitchen/breakfast room with doors leading directly out to the private garden. There is a master bedroom, via a loft conversion, with en-suite, spacious L-shaped living accommodation and, in our opinion, the house is a fantastic family home. As properties in this area are highly sought after an early viewing is highly recommended.

FLORENCE ROAD, SW19

Approx. Gross Internal Floor Area

1275 Sq. ft/118.47 Sq. m
(Including Reduced Height)

1146 Sq. ft/106.47 Sq. m
(Excluding Reduced Height)



GROUND FLOOR

FIRST FLOOR

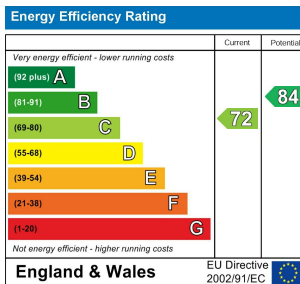
SECOND FLOOR

© Pixangle Property Marketing Ltd. info@pixangle.com Tel: 0208 870 2118



This floor plan has been prepared for the purpose of illustration only in accordance with the latest RICS code of measuring practice and is not to scale. All measurements and areas are approximate and whilst every effort has been made to ensure the accuracy of the plan contained here, no responsibility is taken for any error, omission or misstatement.

- South Park Gardens Location
- Large double reception room
- Three Double Bedrooms
- Two Bath / Shower rooms
- Kitchen / Breakfast Room
- Generous sized garden
- Wimbledon transport links close by
- Victorian Period Features
- EPC Rating C



For Free Mortgage Quote and Best Mortgage Rates, call an Ellisons Mortgage Advisor on 020 8944 9494



Although these particulars are believed to be correct, their accuracy is not guaranteed and they do not form part of any contract.

Celebrating 30 years of successful Sales and Lettings in Merton

